



Confirmit.
everywhere

System Requirements:

Confirmit Pulsar Web

Version 3.21

TABLE OF CONTENTS

About this document3

 Requirements for server installations 3

Confirmit Pulsar Web Server Requirements (On-Premise Only)4

Confirmit Pulsar Web Client Requirements.....5

ChartFx Active Charts: Additional Client Requirements.....6

 i) Add the site to the list of Trusted Sites using the Internet Explorer: 6

 ii) Enable " Full Trust for trusted sites through the Microsoft .NET Framework: 7

 iii) Change User Options within Confirmit Pulsar Web 9

About this document

This document provides users with a complete list of the requirements for using the Confirmit Pulsar Web software, allowing users to verify compliance for their own client systems.

Errors and misspellings in this document can be reported to support@support.confirmit.com

Requirements for server installations

Confirmit installation requirements will no longer be included in this document, but will be kept up to date in the Confirmit Pulsar Web Installation Guide for each version.

Confirmit Pulsar Web Server Requirements (On-Premise Only)

The following are the minimum server requirements for an on-premise Confirmit Pulsar Web installation.

Operating system	<p>Windows 2000 / 2003 server or Advanced server.</p> <ul style="list-style-type: none"> Windows server should be English (United Kingdom) or English (United States) Edition and the locale should be English (United Kingdom) or English (United States). Contact Confirmit if this is not the case. 64 Bit Architecture is NOT supported Virtual server Installation is NOT supported Windows 2008 (or above) is NOT supported
CPU	Pentium III (2 GHz+).
Memory	2 Gb RAM minimum. (4 GB recommended)
Other	UPS (Uninterruptible Power Supply) recommended
Software	<p>SQL Server 2000 (or higher)</p> <ul style="list-style-type: none"> SQL Server should be English (United Kingdom) or English (United States) and the locale should be English (United Kingdom) or English (United States). Contact Confirmit if this is not the case. <p>Internet Information Server (IIS) 5.0 or higher Microsoft Data Access Components (MDAC) 2.8 or higher Microsoft XML Core Components 4.0 Microsoft .NET Framework 1.1 or higher ChartFx Production server 6.2 for Active Chart content.</p>

Confirmit Pulsar Web Client Requirements

	Minimum	Recommended
Operating system	Microsoft Windows 95 Windows NT	Windows XP Windows Vista
Web browser	Internet Explorer 6	Internet Explorer 7
Office Components	Microsoft Office 2000 (or above) formats capable office suite for opening exports: Microsoft Excel 2000 (or above) capable spreadsheet editor required for viewing Confirmit Pulsar Web exports	Microsoft Office 2000 (or above) formats capable office suite for opening exports: Microsoft Excel 2000 (or above) capable spreadsheet editor required for viewing Confirmit Pulsar Web exports
Browser Security Settings	Custom level (Medium level + “allow script initiated window without size or position” is enabled use pop-up blocker” is disabled “file download” is enabled	Pulsar Web added to “Trusted Sites” list Custom level (Medium level + “allow script initiated window without size or position” is enabled use pop-up blocker” is disabled “file download” is enabled
Privacy settings	Medium / Medium high	Medium / Medium high
General -> advanced	Multimedia: Show pictures Play animations on web pages Browsing: enable visual styles on buttons and controls in web page	

ChartFx Active Charts: Additional Client Requirements

Confirmit Pulsar Web also allows further expansion of the ChartFx features through an ActiveX interface. As well as being more intuitive to use, the ActiveX ChartFx interface provides additional functionality to the chart formatting and display by using controls from ChartFx Production Server. Chart Properties can now be accessed through an icon toolbar displayed with the chart, or by right-clicking on areas of the chart to access context-sensitive menus.

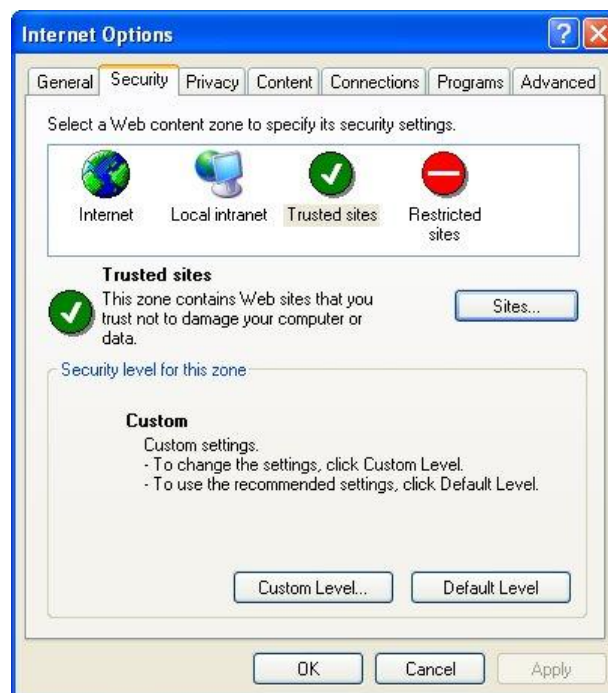
In order for an end user to create active charts, client PC must meet the following requirements:

- Microsoft .NET framework 1.1 installed
- ActiveX controls enabled in the browser
- Full trust enabled for the Pulsar Web Website

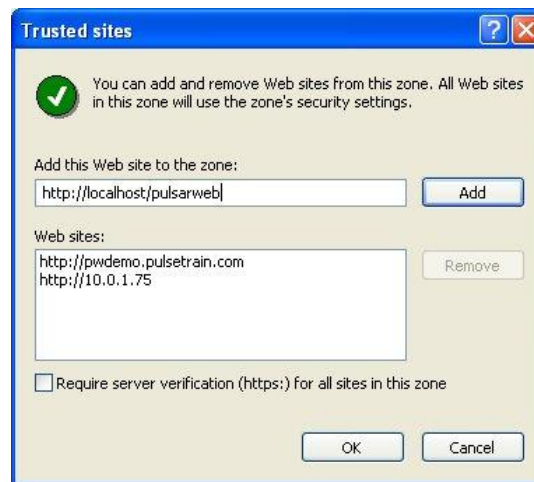
To enable full trust for the Confirmit Pulsar Web server, the following settings need to be made on the Client PC

i) Add the site to the list of Trusted Sites using the Internet Explorer:

From Internet Explorer, go to Tools- Internet Options. Go to the Security tab and Select "Trusted sites" icon



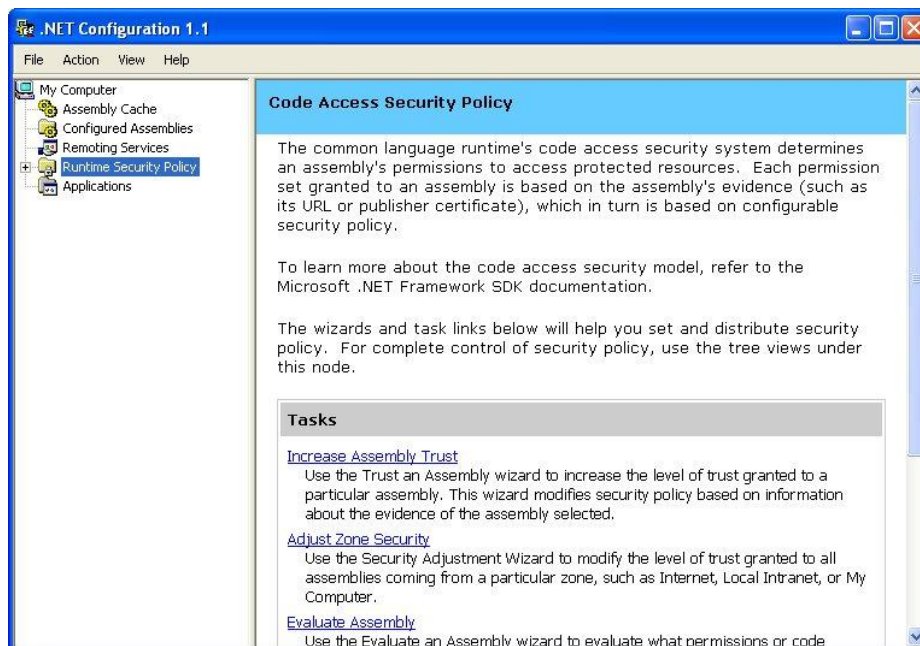
Select "Sites" button and In the input field type the pulsar web site name. For example, <http://www.pulsetrain.com/pulsarweb>. Uncheck the "Require server verification" flag and select "Add".



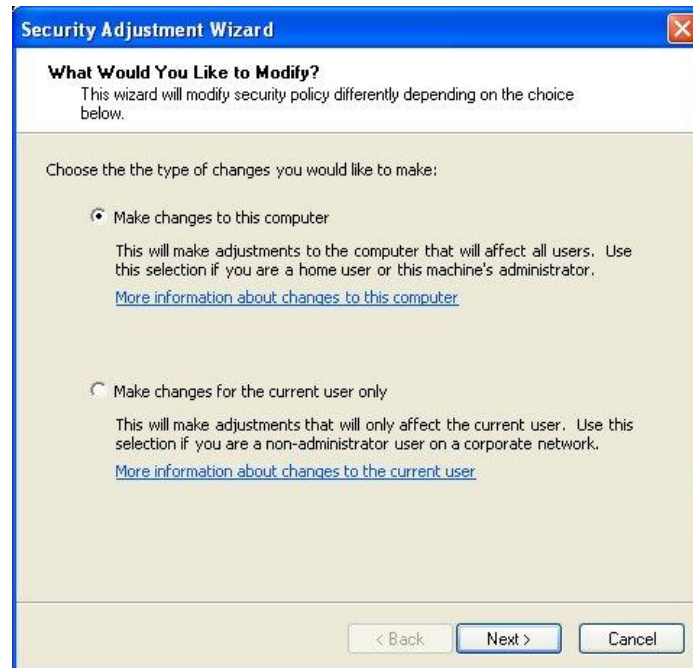
ii) Enable " Full Trust for trusted sites through the Microsoft .NET Framework:

For users with .NET framework 1.1 installed:

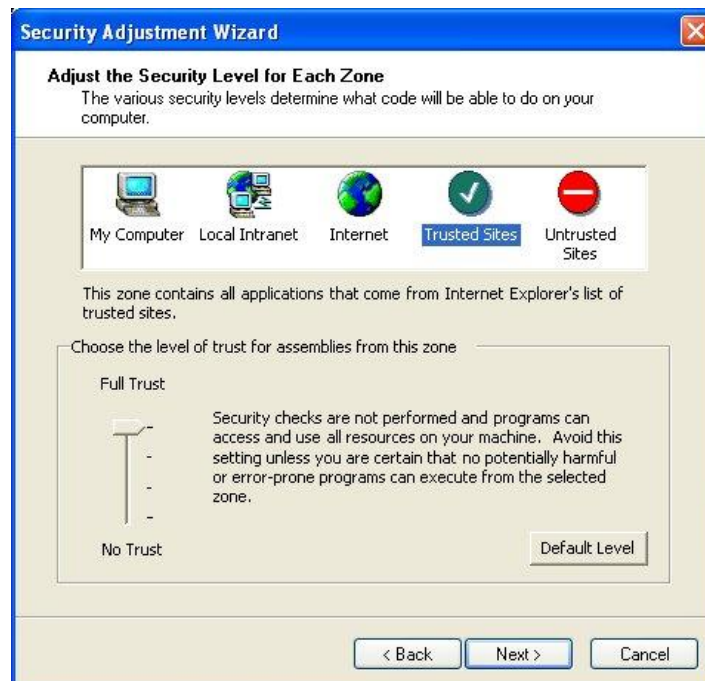
Go to Control Panel- Administrative Tools- and open .NET Framework Configuration. Select Runtime Security Policy



Click on "Adjust Zone Security" in the right-hand window and select "Make changes to this computer". Click Next.



Select the Trusted Sites Zone and set the slider to "Full Trust"



Click "Next", and then "Finish" on the following screen which confirms the setting made:



For users with .NET framework 2.0 installed:

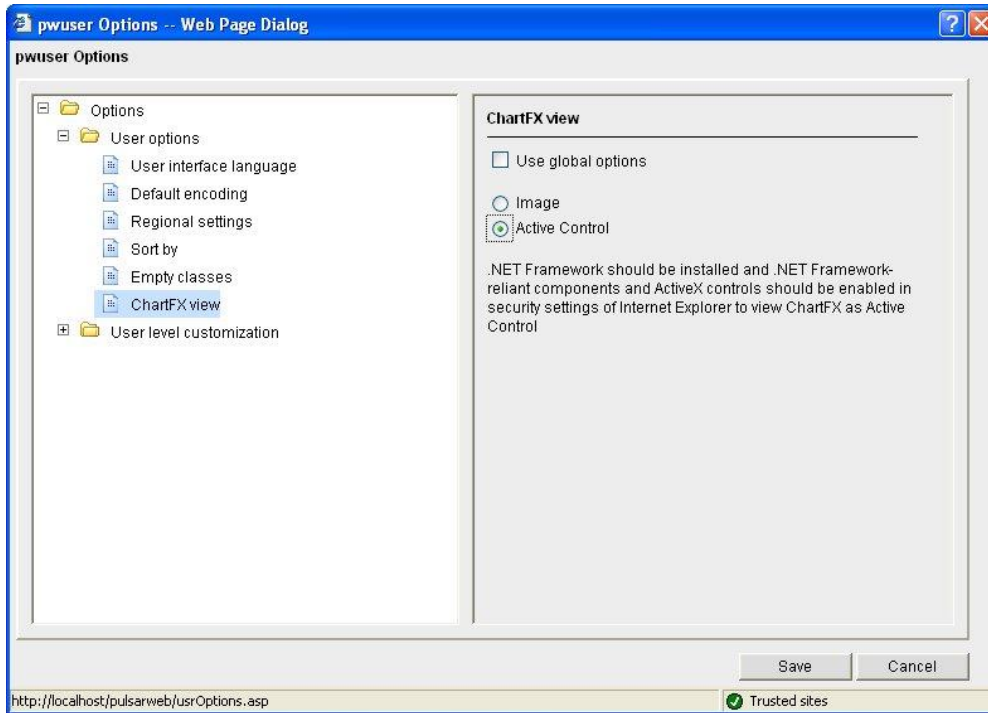
Run the following command (in DOS) on the client machine in the Windows\Microsoft.NET\Framework\v2.0.50727 directory:

```
caspol -machine -addgroup 1. -zone Trusted FullTrust
```

(NB: command is cases sensitive)

iii) Change User Options within Confirmit Pulsar Web

The final setting needs to be selected by the user in Confirmit Pulsar Web. after logging into Pulsar Web, select “User Options” in the top right of the screen. Under User Options – ChartFx View, the user must select “Active Control” to use the Active Charts.



Users who do not have these settings will see the ChartFx images as implemented in the previous version of Confirmit Pulsar Web.